

SHELBOURNE

— ESTATES —



The Kidlington

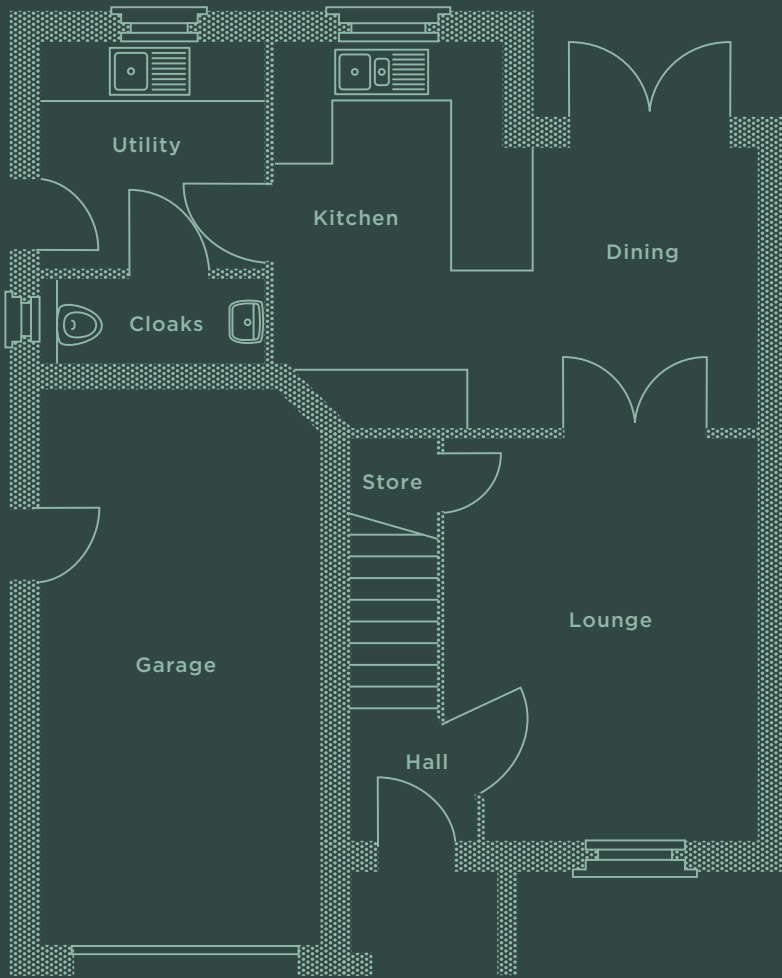
The Kidlington is a truly spacious family home, the ground floor has a sizeable lounge and separate open plan kitchen/dining and family room with large bi-fold doors leading to the garden, as well as under stair storage space. A first floor master bedroom has an en-suite bathroom, while three additional bedrooms and a shared bathroom help to complete the feel of a comfortable and roomy home.

3 Bedrooms

1,051 TOTAL SQ FT

Downstairs

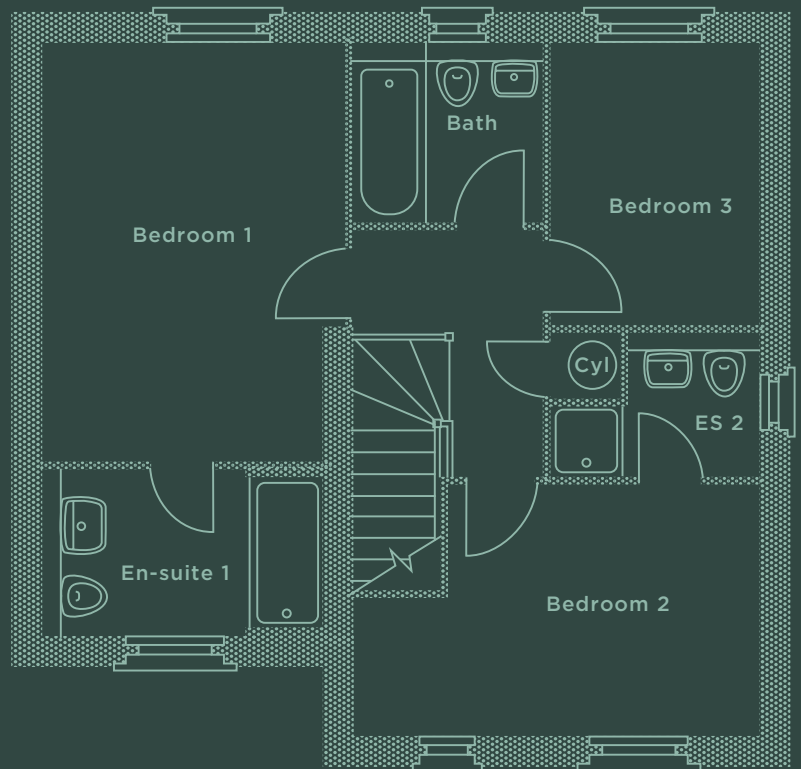
Lounge	3310* x 4250mm 10'10"* x 13'11"
Kitchen/Dining	5100* x 4065*mm 16'9"* x 13'4"*
Utility	2320 x 2375mm 7'7"* x 7'9"
Cloaks	2345 x 880mm 7'8" x 2'11"
Garage	6000* x 3000*mm 19'10"* x 9'8"*



Upstairs

Bedroom 1	3210* x 4435*mm 10'6"* x 14'7"*
En-suite 1	2950 x 1760mm 9'8" x 5'9"
Bedroom 2	4290* x 2665*mm 14'1"* x 8'9"*
En-suite 2	2210* x 1525*mm 7'3"* x 5'0"*
Bedroom 3	2215 x 2990mm 7'3" x 9'10"
Bathroom	1995 x 1880mm 6'7" x 6'2"

*Denotes maximum room dimensions.



This is a computer generated image of The Kidlington, elevation treatment may vary. All internal images are indicative of a Shelbourne house type. Room sizes are approximate and floorplans are not to scale. Plots may be handed and any garages may be single or double. Kitchen and bathroom layouts are indicative. These plans are correct at time of going to press, but may be subject to change during construction. Please ensure that you check for specific plot details. Speak to our Sales Advisor for individual parking configurations.