

# SHELBOURNE

— ESTATES —



## The Willingham

---

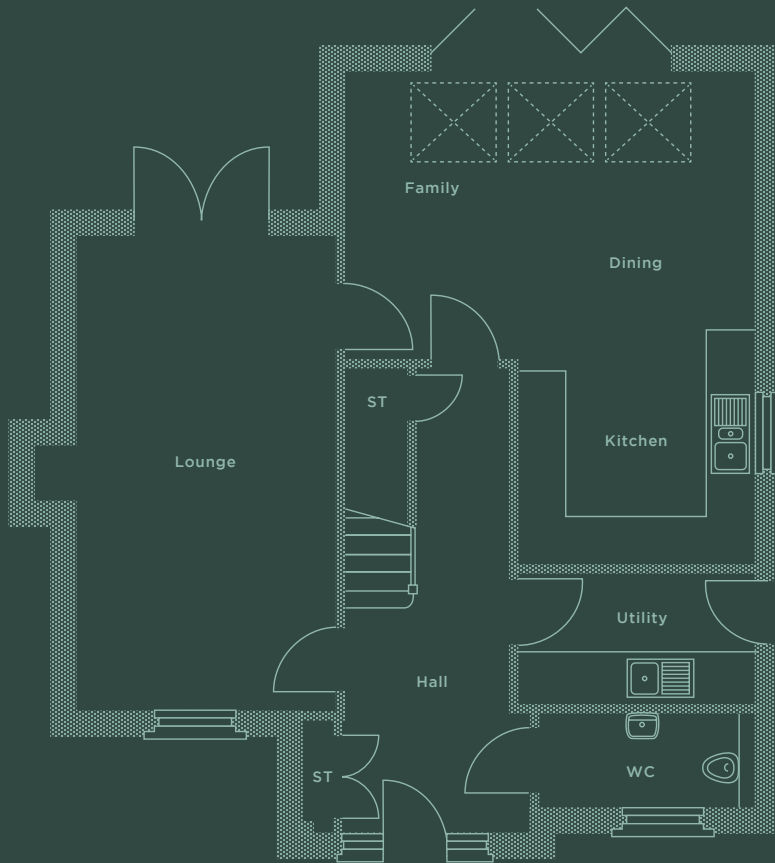
Blending traditional charm and architecture with an impressive entrance hall and a generous open plan kitchen area, spacious, contemporary interior, combined with living areas that flow seamlessly throughout creating wonderful entertaining spaces and everything you look for in the family home of today, and more.

4 Bedrooms

1,424 TOTAL SQ FT

## Downstairs

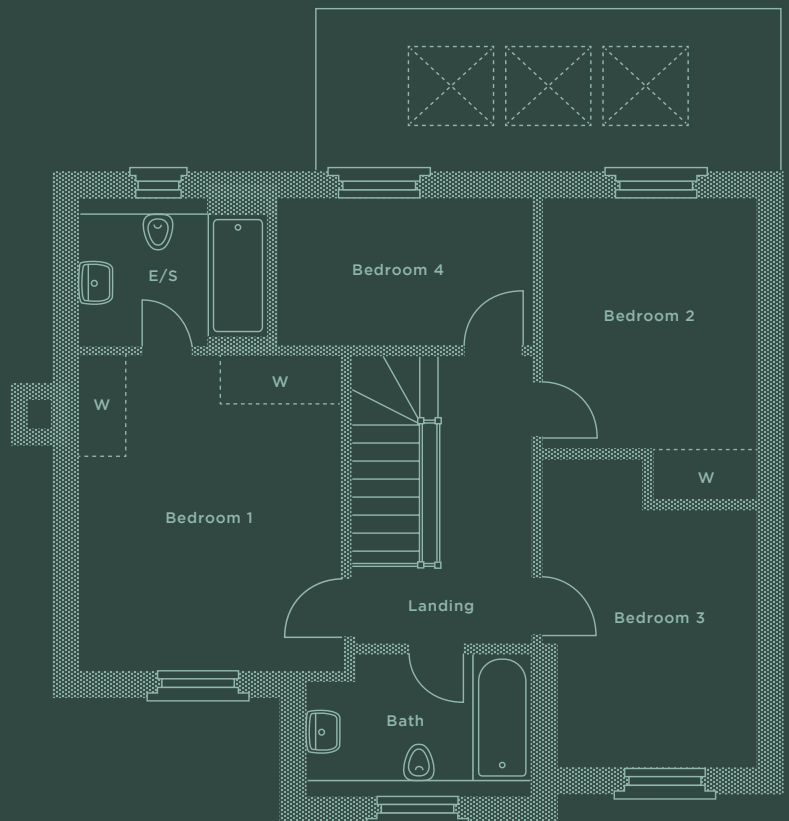
Lounge	3300 x 6025mm 10'10" x 19'9"
Kitchen/ Family/Dining	5175* x 6265*mm 17'0"* x 20'7"*
Utility	3000 x 1625mm 9'10" x 5'4"
Cloaks/WC	2725 x 1170mm 8'11" x 3'10"



## Upstairs

Bedroom 1	3350 x 4025mm 11'0" x 13'2"
En suite	2390 x 1915mm 7'10" x 6'3"
Bedroom 2	2775 x 3860*mm 9'1" x 12'8"*
Bedroom 3	2775* x 4010*mm 9'1"* x 13'2"*
Bedroom 4	3285 x 1910mm 10'9" x 6'3"
Bathroom	2890 x 1860*mm 9'6" x 6'1"*

\*Denotes maximum room dimensions.



This is a computer generated image of The Willingham, elevation treatment may vary. All internal images are indicative of a Shelbourne house type. Room sizes are approximate and floorplans are not to scale. Plots may be handed and any garages may be single or double. Kitchen and bathroom layouts are indicative. These plans are correct at time of going to press, but may be subject to change during construction. Please ensure that you check for specific plot details. Speak to our Sales Advisor for individual parking configurations.